

SMITH AUCTIONEERS, LLC.

REAL ESTATE, ANTIQUES & HOUSEHOLD AUCTION

SUNDAY, JUNE 1, 2008

AUCTION STARTS AT 1:00 PM – House sells at 2:00 PM

SELLERS: Ruth Ann Ogden & Jim & Janice Roush

LOCATION: 1119 North Main, Brookfield Missouri

AUCTIONEERS NOTE: Ruth Ann Ogden has lived at this address for over 40 years. She will be moving to McLarney Manor and is selling most all of her household furnishings and collectibles. To assist Mrs. Ogden, Jim and Janice Roush have recently taken title to the real estate that is being offered for sale. The items offered for sale and the real estate are very clean and well cared for. Beautiful antiques and glassware!



1119 North Main – Brookfield

Unique 2 story home, located on North Main in Brookfield Missouri. Home consists of 3 bedrooms and 2 full bathrooms, formal dining room, formal living room, a nice size family room along with a good size eat-in kitchen. Hardwood floors throughout the house. Included with the property is a nice size 2 car detached double door garage. The lot size is 100 ft. by 150 ft, and includes 2 main street entrances.

Seller is highly motivated, but reserves the right to reject the final bid. 2% broker participation is welcome.

**TO VIEW HOUSE BY APPOINTMENT
PLEASE CALL MARK CLEVELAND
AT 660-412-7040.**

REAL ESTATE TERMS & CONDITIONS:

- Proper ID day of auction
- Ten percent (10%) down day of the sale payable to Professional Land Title escrow account. Balance due at final closing on or before July 1, 2008.
- Real estate taxes prorated to closing.
- Professional Land Title, Brookfield will provide title insurance and will be the closing agent.
- Announcements day of the auction take precedence over prior advertising either written or oral. The information in this flyer is believed to be accurate; however, no liability for its accuracy, errors or omissions is assumed. There are no expressed or implied warranties pertaining to these properties. Smith Auctioneers, LLC. represents the seller in this transaction. Real Estate is being sold "AS IS."
- **REAL ESTATE BROKER PARTICIPATION IS WELCOME** but not required. A 2% commission will be paid to the licensed real estate broker who, prior to the start of the auction, registers the bidder who has the high bid and completes final closing.

ANTIQUUE FURNITURE & MORE

• Double drop leaf table Honduras Mahogany • 2 in-laid leather end tables • Walnut marble top table • Brass lamps • Victorian chairs • 2 barrel chairs • 2- Leather chair • Claw foot round coffee table • Walnut secretary w/ glass front top • RCA Victor stereo Hi Fidelity and many records • Early 1800's New Haven Steeple Clock-working condition • Walnut Hutch • Walnut drop leaf dining table with leaves, seats 10 • 8 Walnut Wicker Cane dining chairs • Walnut glass front hutch • Walnut 4-post full bed • Dresser • Marble top wash stand/vanity • Walnut mirror • Wood/wicker rocking chair • Night stand • Walnut spindle-style full bed • Night stand • Vintage Singer featherweight sewing machine (wow!) • Lap quilting supplies • Vintage Underwood typewriter-works! • 3 Hummel German figurines • Vintage Jenny Lind civil war doll • 2-Spalding Bros. wooden handled golf clubs (these were Harry Dalton's) • Original page framed from Godey Magazine • Bottle of Mrs. Stewarts liquid bluing concentrate • These antiques are in top condition and must be seen to appreciate. Go online for photo page.

ANTIQUUE GLASSWARE

IMPERIAL CRYSTAL CANDLEWICK DISHES (excellent condition) INCLUDES: • 10-6 oz. glasses • 12 stemmed wine goblets • 8 juice glasses • 8 stemmed sorbets • Pair of rolled-edged candlesticks • Pair of 2-lite candlesticks • Vase-plain top crimped vase (beads away base) • 2 misc. vases • Mayonnaise bowl • Two-part relish tray • Four-part relish tray • Jam & Jelly bowl • 2 sweet pea vases • 12 -8 inch plates • 4 cups/saucers • 4 rectangular ash trays • 2 -14.5" centerpiece plates • Footed 11" cake stand • Sugar/creamer set • Water pitcher (wow!!) • Marmalade jar & lid • Silver bowls & trays

RUBY RED DISHES INCLUDES: • 8-6 inch plates • 9 cups & saucers • 8 water glasses • 8 goblets • 2 -8 inch bowls • 13" inch platter • 2 relish trays • Creamer/sugar set • 4 salts • fluted bowl • covered box • **PRINCESS CHINA SET INCLUDES:** 12-6 inch plates, 12 cups/saucers • **LOTS OF MISC. GLASSWARE** • Carnival glass • Vintage porcelain lighter • Several sets of fine stem ware • Hand painted Vintage Nippon Bowl w/holed plate insert • Candy dishes • Coffee Mill from 1897 • Imperial coffee grinder • Wooden butter mold and Lots more!

FURNITURE & HOUSEHOLD ITEMS

• Hammond Organ • Zenith color TV • Sleeper sofa • Couch • Many area floor rugs in various sizes • Amana washer and dryer-almost new • Dishes • Pots and pans, roasters, etc. • Many kitchens utensils

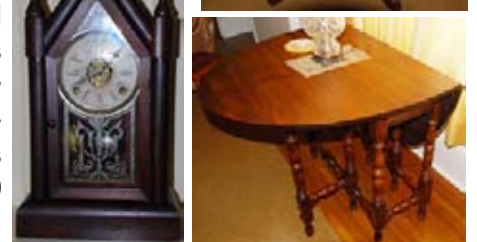
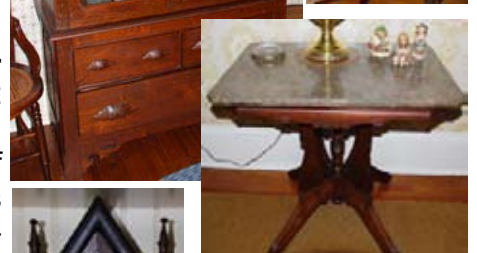
GO ONLINE FOR MANY MORE PHOTOS!

TERMS: Cash or check with proper ID day of auction. Nothing removed until settled for day of sale. 10% Buyers premium charged on all items excluding real estate.

FOOD WAGON AVAILABLE



BEAUTIFUL ANTIQUES!



LOTS OF CANDLEWICK AND RUBY RED!!



**SEE PHOTO PAGES AND
SALE BILL ONLINE
SMITHAUCTIONEERSONLINE.COM**

LICENSED AUCTIONEERS

SMITH AUCTIONEERS, LLC

Phone: 660-258-7351 • 660-734-1762 • 660-375-1836

502 South State Street • Brookfield, Missouri 64628

www.smithauctioneersonline.com



"PROFESSIONAL AUCTION SERVICE SINCE 1978"